

1897

SHAW'S

ENGLAND

Handcrafted
for life

When Shaws of Darwen was founded in the closing years of the 19th century, we had a vision – to make the finest handcrafted fireclay sinks in the whole of England.

Today, some 120 years on, that vision has been more than realised; Shaws now enjoys, not only a national, but a worldwide reputation for the beauty, quality, craftsmanship and sheer practicality of our unique artisan products.

We're immensely proud of our heritage, and the fact that our sinks are still handcrafted at our premises in the same quiet corner of North West England as they were when we first started out on Valentine's Day 1897. We're also extremely proud that the techniques lovingly used by our time-served craftsmen haven't changed in all those years.

So much so, every handmade Shaws sink carries an impression on its base of the name of the master craftsman who created it. This, along with our Certificate of Authenticity, is your assurance that your investment has been handcrafted for life.





OUR HANDCRAFTED

COLLECTIONS

- 14 -

The Original Collection

- 18 -

The Contemporary Collection

- 24 -

The Inset & Undermount Collection

- 28 -

The Professional Collection

- 32 -

The Embellishment Collection

- 35 -

Care & Maintenance

- 36 -

Our Lifetime Warranty

Every Shaws sink
bears the name of the
master craftsman who
created it, by hand.



OUR PROCESS

Handcrafted for Life

Iconic, timeless,
aspirational and
tactile, each sink is
an original design,
handcrafted to give
a lifetime of service
and pleasure.

At Shaws we don't believe in mass production; we believe in quality, individuality and authenticity in all we do. It takes time to hand-make Shaws sinks, between three to four weeks in total, using time-honoured techniques that have been passed down from master craftsman to apprentice for well over a century.

Known as 'slip casting', the process begins with a mixture of locally sourced clay and water being poured into porous moulds – by hand, naturally.

When the newly formed sinks are dry enough, craftsmen remove them from their moulds before getting to work doing what they do best – expertly hand-finishing these artisan products through a process of sponging and 'fettling' to create a smooth surface.

It's at this stage that the master craftsman proudly imprints his name on the base of his creation, before leaving the sink to gradually dry out for a period of over 40 hours. Only then are the sinks deemed ready to be prepared with a first coat of glaze, before being glazed for a second time to improve the feel and durability of the product. Firing in specially designed kilns at temperatures of over 1200 degrees Celsius completes this rigorous process.





OUR BELIEFS

Pride & Passion



First and foremost, Shaws is a company that believes wholeheartedly in delivering on our promise:

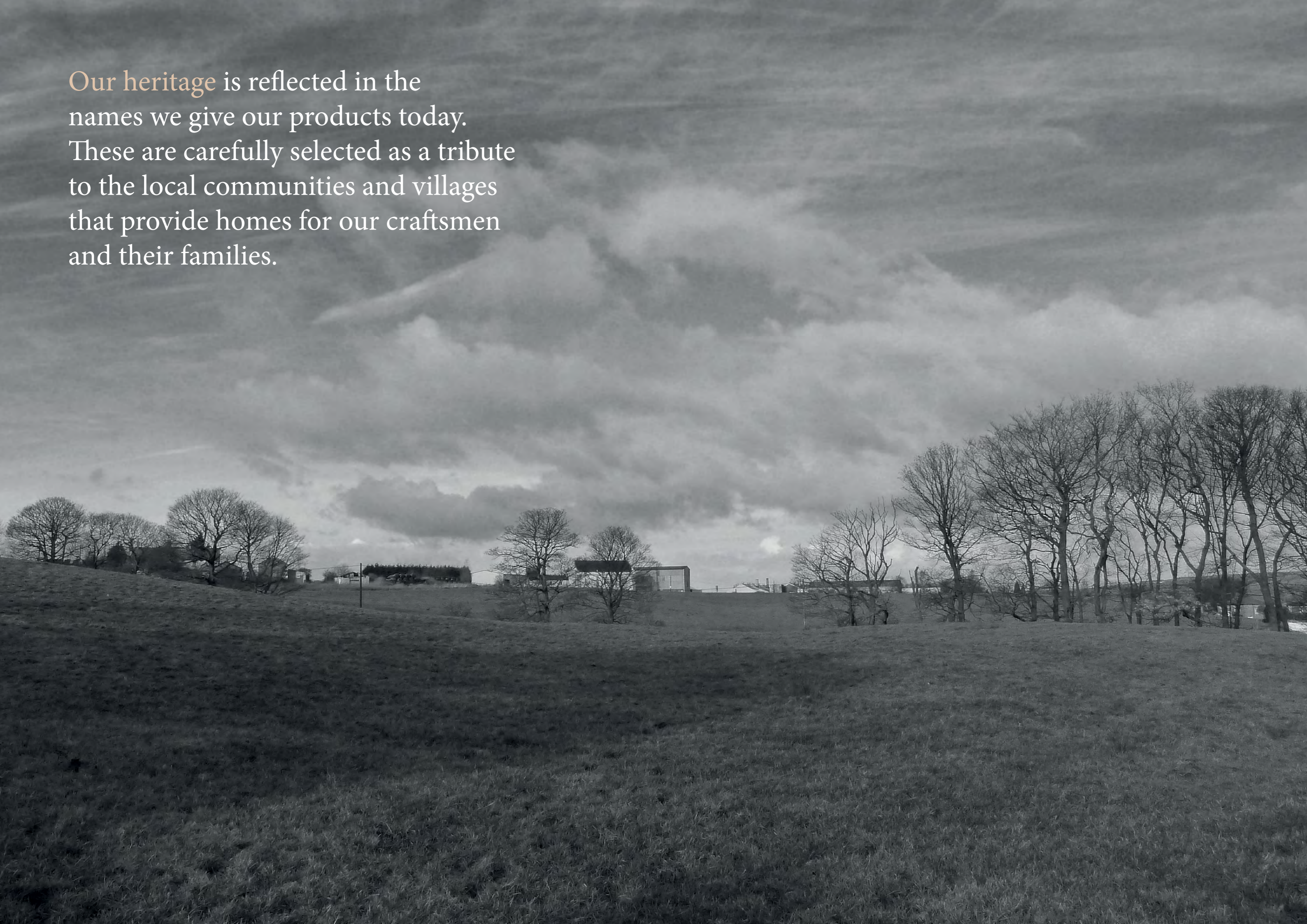
To make the most beautiful, practical, handcrafted fireclay sinks in the world.

We believe in being authentic in all we do, using traditional, time-honoured techniques to produce iconic products that grace the finest establishments and homes the world over.

We believe that our reputation for delivering quality and reliability is as important as producing timeless and elegant design pieces; that's why every Shaws sink comes with a lifetime guarantee.

We believe that every sink that bears the Shaws name should be a thing of beauty, a unique creation, with a charm and character all of its own, bearing testament to the skill and expertise of the master craftsman who lovingly and painstakingly created it.

Our heritage is reflected in the names we give our products today. These are carefully selected as a tribute to the local communities and villages that provide homes for our craftsmen and their families.





THE
– ORIGINAL –
COLLECTION

With its inspired design and timeless appeal, a sink from our Original Collection makes the perfect, iconic focal point for any traditional styled kitchen.

But more than that, like all Shaws products, these artisan fireclay sinks, with their original designs and details, are handcrafted. What's more, we still use age-old techniques, making them look and feel truly beautiful.



THE
– ORIGINAL –
 COLLECTION

Traditional, beautiful and practical, the Original Collection represents our premium offering, designed to provide you with a sink of substance, created to add authenticity, charm and character to your room.

All our sinks come standard in white, or biscuit by special order only.



– EGERTON –

Features include: Double bowl sink with offset dividing wall. Unique patterned front. No overflows. 90mm waste outlets suitable for basket strainers or waste disposers. Shaws original chrome basket strainers included.

Egerton Dimensions: 997 x 470 x 255mm | **Weight:** 80kg



– EDGORTH –

Features include: Double bowl sink with offset dividing wall. Plain front. No overflows. 90mm waste outlets for basket strainers or waste disposers. Shaws original chrome basket strainers included.

Edgorth Dimensions: 997 x 470 x 255mm | **Weight:** 80kg



– RIBCHESTER –

Available as 800 and 1000 wide.

Features include: Double bowl sink with central dividing wall. Distinctive fluted front. 3 hole overflows. 90mm waste outlets suitable for basket strainers or waste disposers. Shaws original chrome basket strainers included.

Ribchester 800 Dimensions: 795 x 465 x 234mm | **Weight:** 70kg
Ribchester 1000 Dimensions: 997 x 465 x 234mm | **Weight:** 76kg



– BOWLAND –

Available as 600 and 800 wide.

Features include: Distinctive fluted front. 3 hole overflow. Central 90mm waste outlet for basket strainer or waste disposer. Shaws original chrome basket strainer included.

Bowland 600 Dimensions: 595 x 465 x 220mm | **Weight:** 42kg
Bowland 800 Dimensions: 797 x 535 x 220mm | **Weight:** 75kg





THE
– CONTEMPORARY –
COLLECTION

We've combined modern design and traditional craftsmanship to create our elegantly stylish Contemporary Collection.

Beautiful and tactile, these artisan fireclay sinks are handcrafted, using traditional techniques, making them practical and hardwearing.

Choose from a wide variety of inspired styles, such as our iconic Butler and Shaker sinks, all of which are beautifully proportioned with clean lines and tighter corners to perfectly suit contemporary kitchen spaces.



THE
- CONTEMPORARY -
 COLLECTION

A truly timeless collection of lasting quality designed to add timeless character and personality to the most contemporary of rooms.

All our sinks come standard in white, or biscuit by special order only.



- BUTLER -

Available as 600 and 800 wide.

Features include: Central 90mm waste outlet suitable for basket strainer or waste disposer. Round overflow. Butler 600 model also available with no overflow. Shaws original chrome basket strainer included.

Butler 600 Dimensions: 595 x 460 x 255mm | Weight: 50kg
 Butler 800 Dimensions: 795 x 460 x 255mm | Weight: 60kg



- WHITEHALL -

Features include: Deep, generous single bowl sink that is suitable for laminate worktops. Central 90mm waste outlet suitable for basket strainer or waste disposer. Round overflow. Shaws original chrome basket strainer included.

Whitehall Dimensions: 595 x 470 x 310mm | Weight: 55kg



- DOUBLE BOWL -

Available as 800 and 1000 wide.

Features include: Compact double bowl sink with central dividing wall. Central 90mm waste outlets suitable for basket strainers or waste disposers. Round overflows. Shaws original chrome basket strainers included.

Double Bowl 800 Dimensions: 795 x 465 x 229mm | Weight: 62kg
 Double Bowl 1000 Dimensions: 995 x 465 x 229mm | Weight: 78kg



- WATERSIDE -

Features include: Bow fronted single bowl sink with 90mm waste outlet to accommodate basket strainer or waste disposer. Round overflow. Shaws original chrome basket strainer included.

Waterside 600 Dimensions: 597 x 530 x 220mm | Weight: 46kg



- SHAKER DOUBLE -

Available as 800 and 900 wide.

Features include: Double bowl sink with dropped central dividing wall. Central 90mm waste outlets suitable for basket strainers or waste disposers. Round overflows. Both models are also available with no overflow. Shaws original chrome basket strainers included.

Shaker Double 800 Dimensions: 795 x 465 x 229mm | Weight: 58kg
 Shaker Double 900 Dimensions: 895 x 465 x 229mm | Weight: 63kg



- BELFAST -

Available as 460 and 600 wide.

Features include: Double bowl sink with dropped central dividing wall. Central 90mm waste outlets suitable for basket strainers or waste disposers. Round overflows. Both models are also available with no overflow. Shaws original chrome basket strainer included.

Baby Belfast Dimensions: 460 x 380 x 205mm | Weight: 32kg
 Belfast Dimensions: 595 x 460 x 255mm | Weight: 50kg

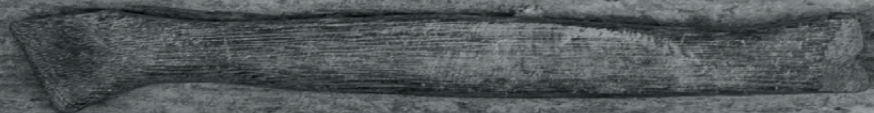
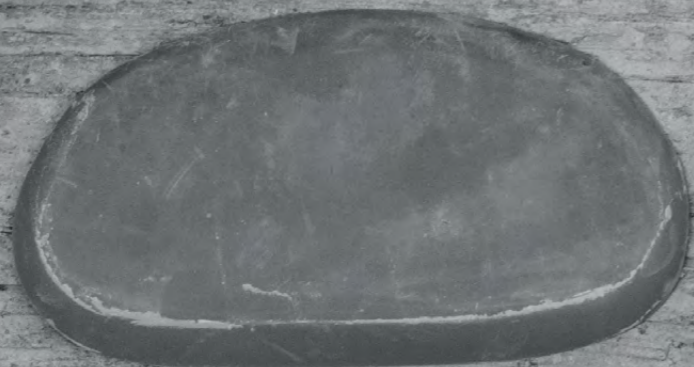
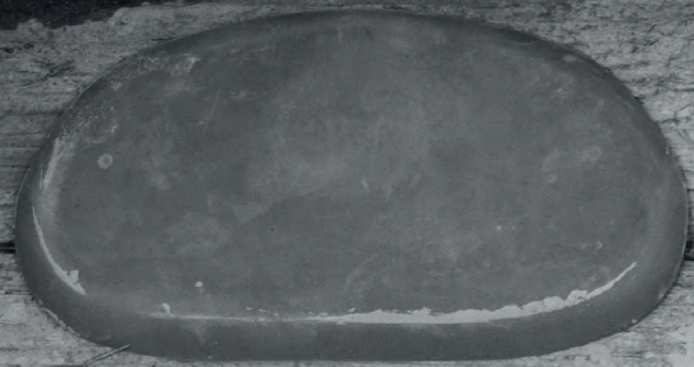
- SHAKER SINGLE -

Available as 600 and 800 wide.

Features include: Large, deep single bowl sink with central 90mm waste outlet suitable for basket strainer or waste disposer. Round overflow. Shaker Single 600 also available with no overflow. Shaws original chrome basket strainer included.

Shaker Single 600 Dimensions: 595 x 460 x 255mm | Weight: 60kg
 Shaker Single 800 Dimensions: 762 x 457 x 284mm | Weight: 69kg





Our master craftsmen expertly hand-finish each artisan product through a process of sponging and 'fettling' to create a smooth surface.



THE
– INSET & UNDERMOUNT –
COLLECTION

The elegant handcrafted fireclay ceramic sinks in our Inset & Undermount Collection, are beautifully designed and carefully proportioned to fit perfectly within modern-day kitchen spaces.

Ideal for sole use, or to complement our Original and Contemporary Collection, these sinks are popular for installation in secondary preparation areas, such as kitchen island units.



THE
– INSET & UNDERMOUNT –
COLLECTION

Beautiful and practical, these elegant, handcrafted products can be either inset or undermounted with any solid work surface such as granite, marble, quartz or solid wood.

All our sinks come standard in white, or biscuit by special order only.



– INSET –

Available as 600 and 800 wide.

Features include: Inset or undermount sink. Round overflow. Central 90mm waste outlet suitable for basket strainer or waste disposer. Shaws original chrome basket strainer included.

Inset 600 Dimensions: 595 x 460 x 255mm | Weight: 50kg
Inset 800 Dimensions: 760 x 460 x 265mm | Weight: 65kg



– SQUARE –

Features include: Inset or undermount sink. Round overflow. Central 90mm waste outlet suitable for basket strainer or waste disposer. Shaws original chrome basket strainer included.

Square Dimensions: 460 x 460 x 191mm | Weight: 30kg

– ROUND –

Features include: Inset or undermount sink. Round overflow. Central 90mm waste outlet suitable for basket strainer or waste disposer. Shaws original chrome basket strainer included.

Round Dimensions: 460 Diameter x 191mm | Weight: 19kg



Our **time-honoured** techniques have been passed down from master craftsman to apprentice, for well over a century.



THE
– PROFESSIONAL –
COLLECTION

This collection has been specifically designed for commercial applications such as schools, hotels, leisure, public buildings and laboratories.

These heavy-duty fireclay commercial products are expertly glazed and fired using state-of-the-art kiln technology, making them extremely robust, antibacterial, and both stain and acid resistant.



THE
– PROFESSIONAL –
COLLECTION

Specifically designed for commercial applications such as schools, hotels, leisure, public buildings and laboratories. These extremely durable professional quality sinks are backed by a 10 year warranty.

All Professional sinks are available in white only.



– LABORATORY Type 3 –

Features include: Extremely durable science-friendly fireclay lab sink, designed to fix under a benchtop. No overflow. 38mm waste outlet suitable for basket strainer or waste disposer. Shaws original chrome basket strainer included.

Lab Type 3 Dimensions: 595 x 380 x 230mm | Weight: 38kg

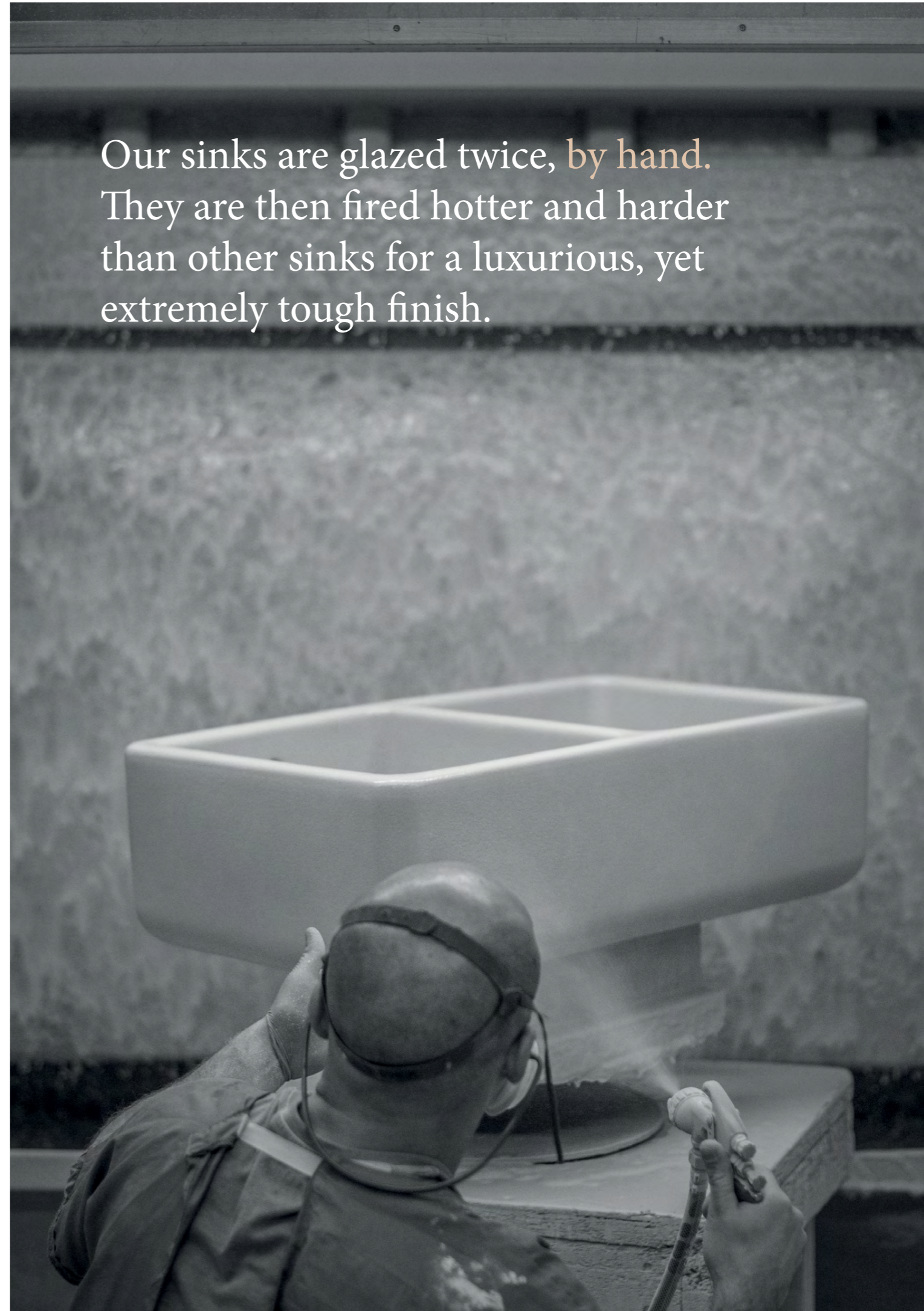


– LABORATORY Type 4 –

Features include: Extremely durable science-friendly fireclay lab sink, designed to fix under a benchtop. No overflow. 38mm waste outlet suitable for basket strainer or waste disposer. Shaws original chrome basket strainer included.

Lab Type 3 Dimensions: 460 x 365 x 200mm | Weight: 26kg

Our sinks are glazed twice, **by hand**. They are then fired hotter and harder than other sinks for a luxurious, yet extremely tough finish.





THE
– EMBELLISHMENTS –
COLLECTION

From drainers to basket strainers, cleaning and care kits, we have a wide collection of accessories and accompaniments that have been carefully selected for their quality, function and style.

Rest assured that Shaws would include nothing less than the best to complement our world-class collections of handcrafted sinks and taps.



THE
– EMBELLISHMENTS –
 COLLECTION

A wide collection of accessories and accompaniments that have been carefully selected for their quality, function and style.

– SMALL FLUTED DRAINER –

Durable fireclay drainer.
 Dimensions: 460mm x 460mm x 50mm.



– BASKET STRAINERS –

Available in 38mm and 90mm.
 Designed to complement our sink ranges, our elegant 90mm basket strainers are available in five finishes. Also available, our 38mm strainers are specifically designed to suit our Belfast Sinks.

90mm Finishes:
 Chrome, Gold, Polished Nickel, Brushed Nickel or Antique Bronze.

38mm Finishes: Chrome or Gold.



Shown above in Chrome and Gold.

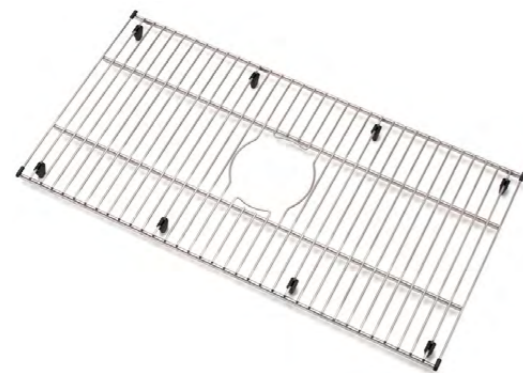
– RUBBER MATS –

Available in Small and Large.
 Designed to complement our sink ranges, our Shaws branded anti-slip rubber mats are available in 2 sizes.



– SINK GRIDS –

Available in 6 sizes.
 Designed to complement our sink ranges, our Shaws sink grids offer extra protection and drainage.



All Shaws fireclay products
are handcrafted for life.

CARING FOR YOUR SHAWS SINK

Shaws sinks are proven to be incredibly durable and long-lasting. To keep your investment looking its best, we recommend it be cleaned daily using a soft sponge or cloth and a non-abrasive cleaning product – a simple solution of soap and water generally does an excellent job.

Although extremely hardwearing (being heatproof, and resistant to impact, chemicals, dirt & stain and odours) not even a Shaws fireclay sink is impervious to damage.

So, if a metal pan or cutlery marks the surface of your pride and joy, we have a range of accessories that will easily restore it to its original beauty.

BUILT FOR ENDURANCE



ODOUR
 RESISTANT



HEAT
 RESISTANT



IMPACT
 RESISTANT



CHEMICAL
 RESISTANT



DIRT & STAIN
 RESISTANT

DESIGNED FOR REASSURANCE



NATURAL
 MATERIAL



LIFETIME
 WARRANTY



WASTE DISPOSAL
 COMPATIBLE



ANTIBACTERIAL



RECYCLABLE

Our Warranty

At Shaws our promise to you is to provide the best sinks in the world, backed up with outstanding personal customer service.

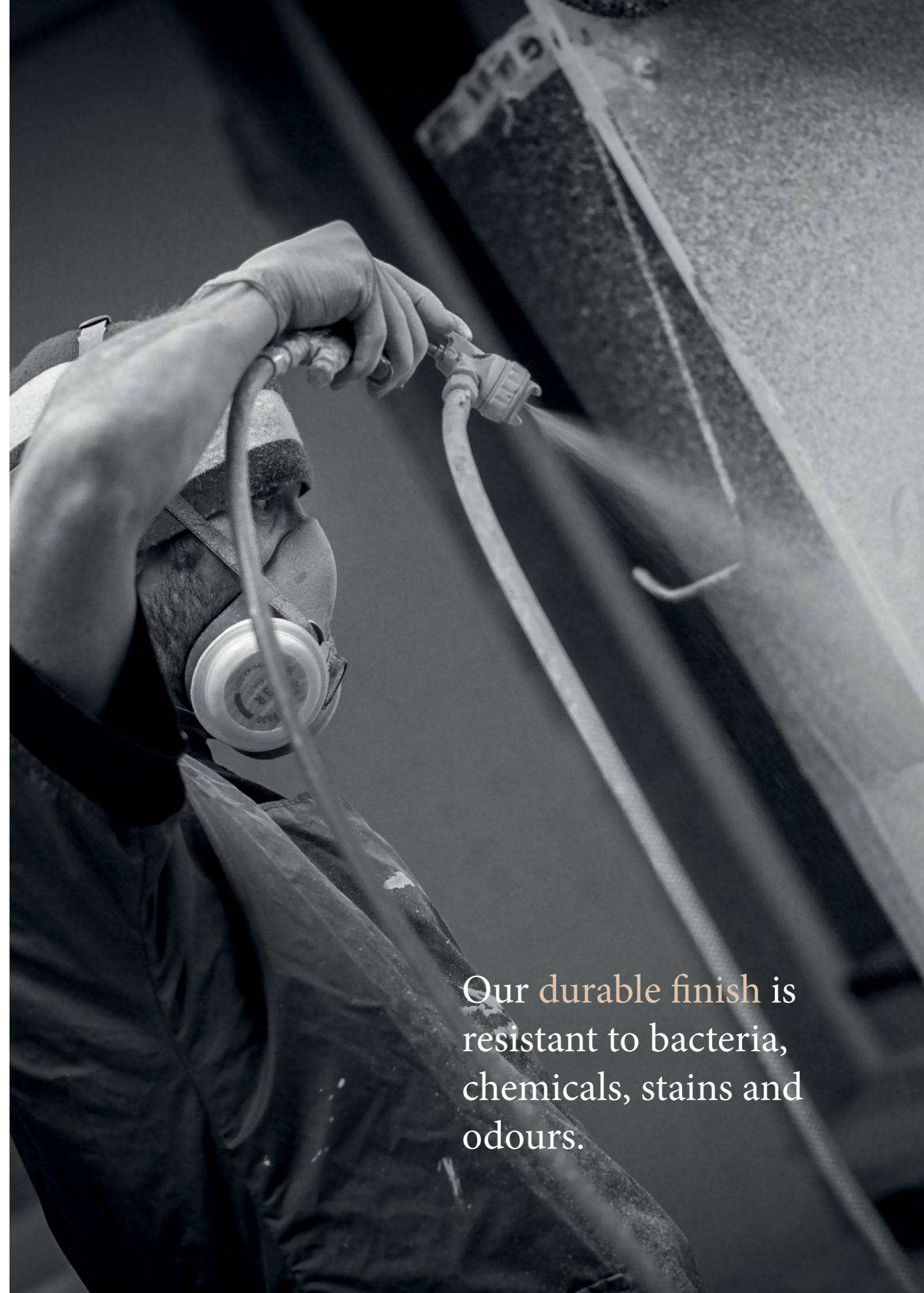
That's why all our products are not only of exceptional quality, but carry comprehensive warranties to give you total peace-of-mind.



All Shaws sinks carry a **Lifetime** Warranty

PLEASE NOTE: Our sink dimensions can vary by a plus or minus of 2%, as they are hand-made and shrink during firing. We therefore recommend that your kitchen fitter is aware of this and that no work surfaces or cabinets are cut before measuring your sink. Due to the handcrafted nature and weight of our sinks, we also recommend a specialist kitchen fitter installs your sink and that it is properly supported.

Our **durable finish** is resistant to bacteria, chemicals, stains and odours.





Handcrafted for life

DISTRIBUTED IN AUSTRALIA BY LUXE BY DESIGN. 28/388 NEWMAN ROAD, GEEBUNG QLD 4034 AUSTRALIA
PHONE . 07 3265 7133 **EMAIL** . SALES@LUXEBYDESIGN.COM.AU **WEB** . LUXEBYDESIGN.COM.AU